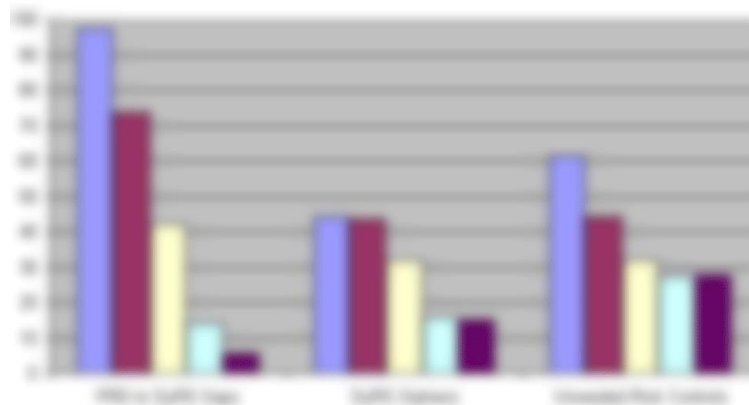


*Metrics Dashboard™* is an IBM® DOORS® accelerator product from River North Solutions



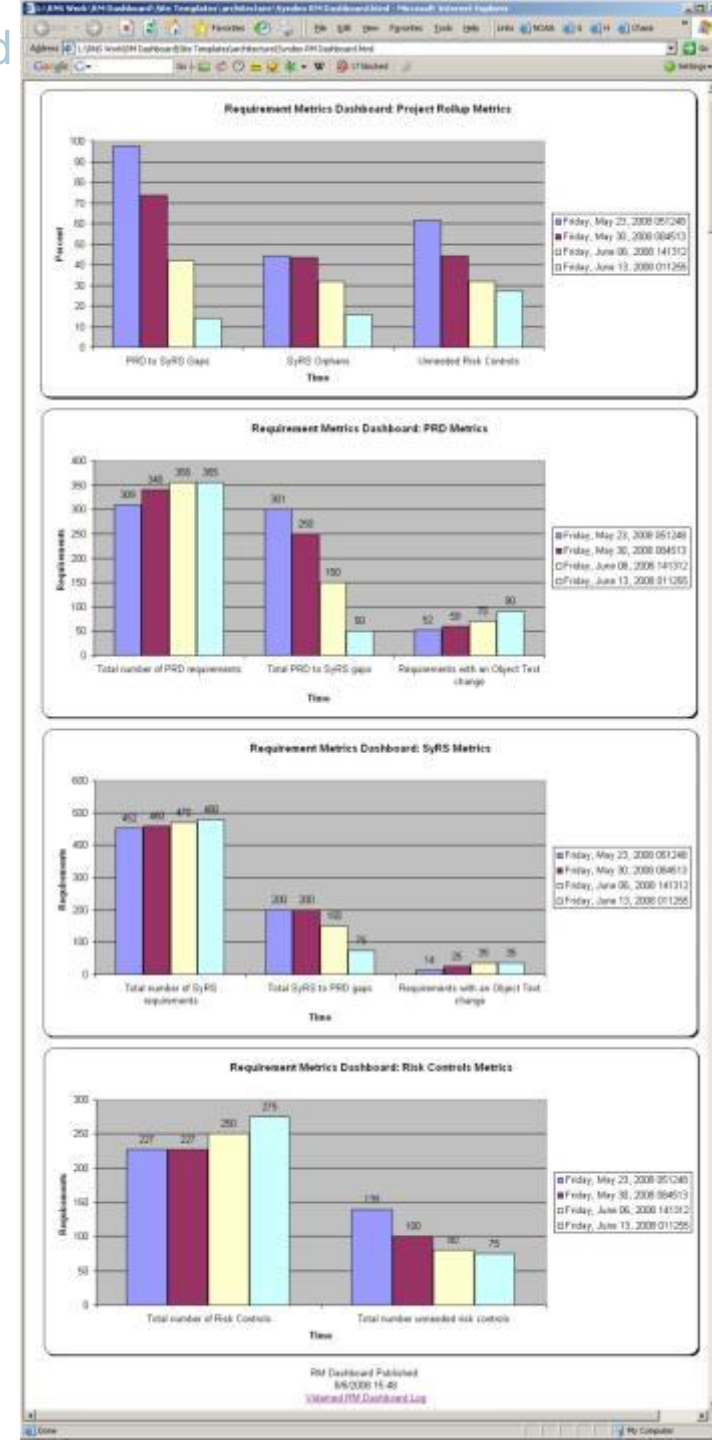
# ***Metrics Dashboard™* for DOORS**

V1.3



# Overview

- Dashboard Website Displaying Projects Whose Metrics Can Be Viewed



# Metrics Dashboard Overview

- Runs regularly as a Windows scheduled task
- Analyzes 4 DOORS modules:
  - For Example:
    - Product Requirements Document
    - System Requirements Spec
    - System Design Spec
    - Validation Test Spec
- Updates charts containing metrics data
- Publishes charts to a web site
- Unattended operation
- Metrics consumers navigate to web site – no software interaction necessary

Windows  
Scheduler

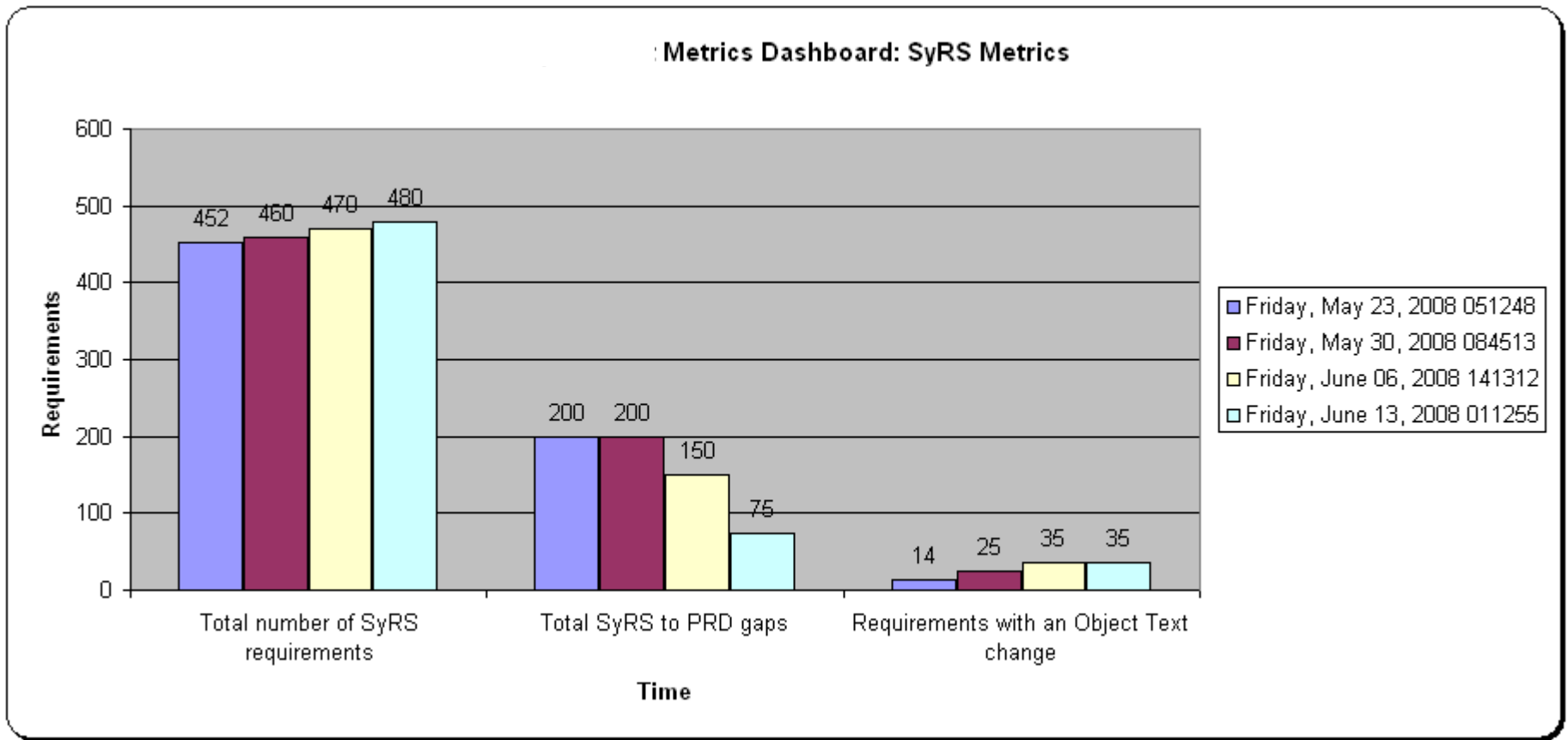


Dashboard Website Home Page



# Interpreting Dashboard Metrics

- Example: System Level Metrics

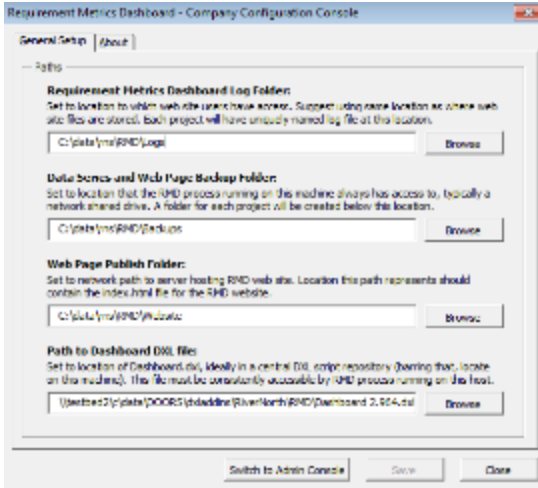


# Interpreting Dashboard Metrics

- Example: System Level Chart
  - Example metric: Total number of system requirements:
    - System requirement growth
  - Example metric: Total orphan system requirements:
    - System requirements not traced up to product level
    - Less is better, goal is zero
  - Example metric: Total number of objects with a particular status:
    - Approved vs. Pending Approval
    - Less Pending Approval is better

# RMD Overview – Dashboard Components

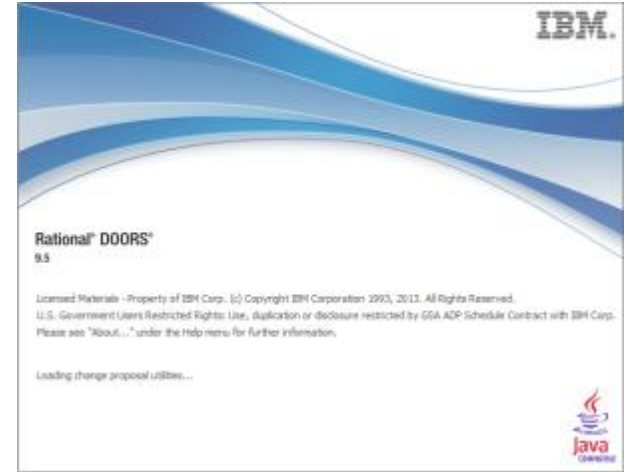
## Company Configuration Console



## Administrator Console



## DOORS

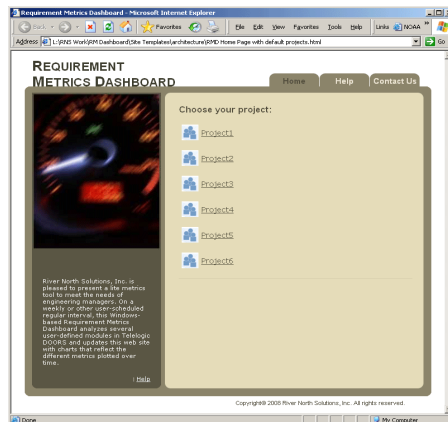


## Dashboard Website

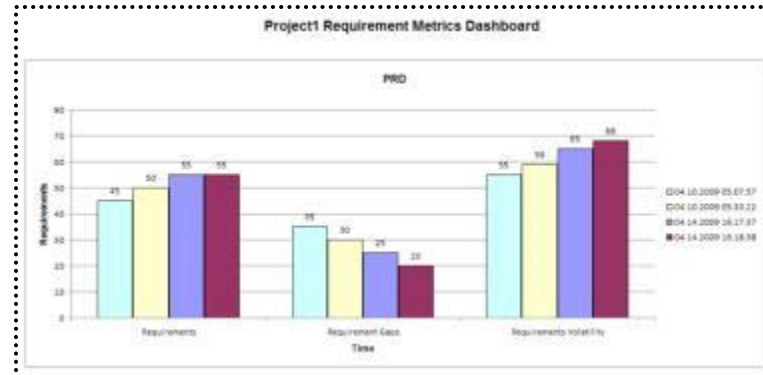
### Windows Scheduler



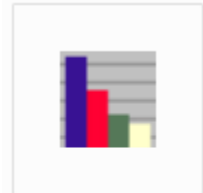
Task Scheduler



## Metrics Charts

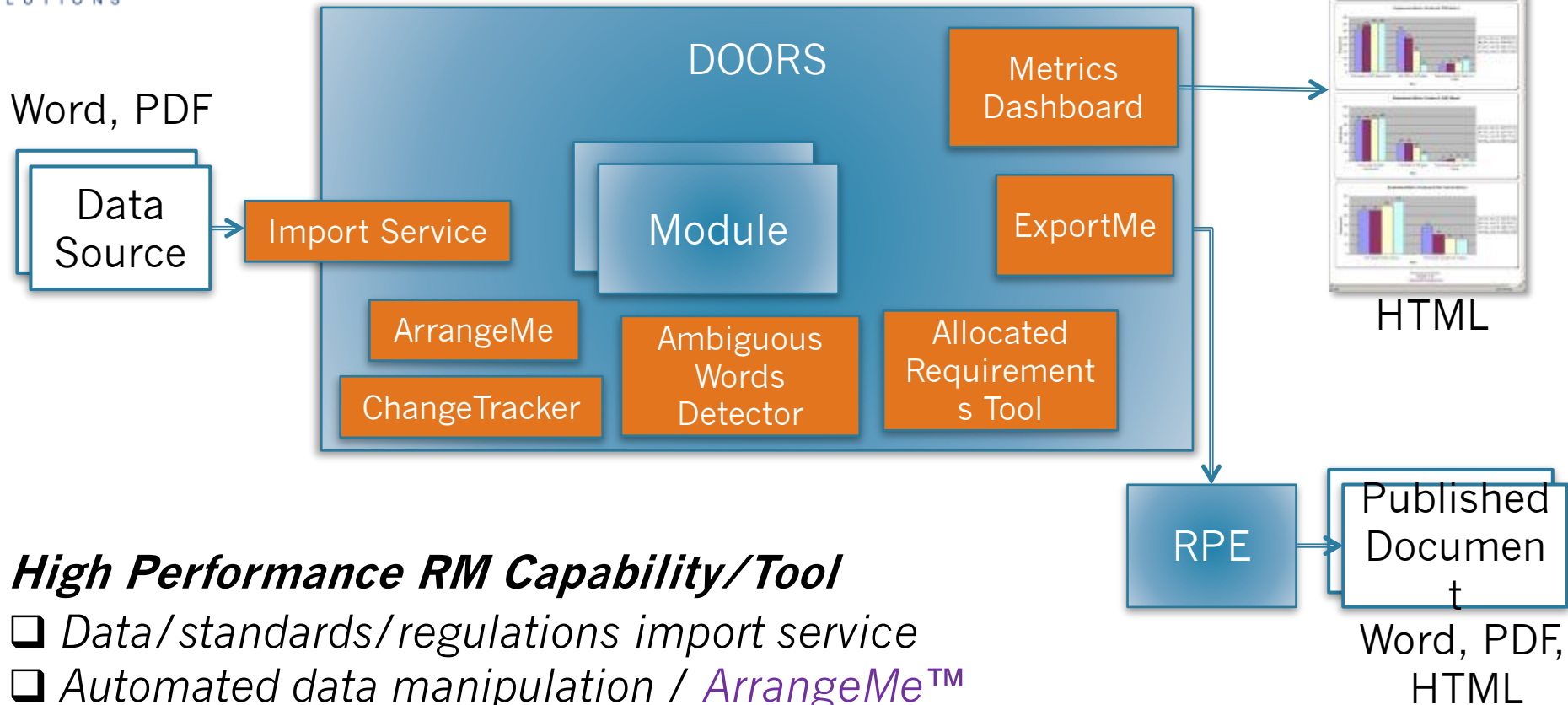


## Installer



Requirement Metrics Dashboard 1.2.5 Setup.exe

# River North Accelerator Tools for Requirements Management & Document Publishing



## **High Performance RM Capability/Tool**

- Data/standards/regulations import service
- Automated data manipulation / [ArrangeMe™](#)
- Boost requirement quality, reduce churn / [Ambiguous Words Detector™](#)
- Automated, simplified, consistent document publishing / [ExportMe™](#)
- Monitor leading indicator trends / [Metrics Dashboard™](#)
- Display revision markup using rich text / [ChangeTracker™](#)
- Reuse requirements / [Allocated Requirements Tool™](#)

# River North Profile – Industries/Clients\*, Products

- **Aerospace & Defense**
  - Aerojet Rocketdyne
  - Boeing
  - Collins Aerospace
  - Crane Aerospace
  - LMCO-NASA
  - NASA JPL
  - Northrop Grumman
- **Energy**
  - NuScale Power
  - Sandia National Labs
  - Westinghouse Nuclear
- **Automotive**
  - Ford Motor Company
  - Honda Motor Company
  - Johnson Controls
- **Medical Device**
  - Ameda
  - Ascensia Diabetes Care
  - Baxter Healthcare
  - Bayer Healthcare
  - Eli Lilly
  - Hospira
  - J&J Vision
  - Roche Diagnostics
  - St. Jude Medical (Abbott)
- **Semiconductor**
  - NXP Semiconductors
- **Transportation**
  - Ansaldo STS
  - Bombardier Transportation
  - GE Transportation
- **Telecommunications**
  - Comcast
  - Motorola Solutions
- **Industrial**
  - Chamberlain
  - HP Enterprise Services

## DOORS Classic Accelerator Products from River North

- *Ambiguous Words Detector™ (AWD)* – boosts requirement quality by automatically detecting ambiguous words in DOORS
- *ArrangeMe™* – automated DOORS data manipulation/movement
- *Requirement Metrics Dashboard™ (RMD)* – automated metrics production for DOORS
- *ChangeTracker™* – revision markup displayed using rich text in DOORS
- *ExportMe™* – document publishing automation taken to a new level in DOORS
- *Allocated Requirements Tool™ (ART)* – facilitates requirement reuse in DOORS

### Contact Information

[www.rivernorthsolutions.com](http://www.rivernorthsolutions.com)  
[info@rivernorthsolutions.com](mailto:info@rivernorthsolutions.com)



\* Partial List



# For More Information...

- *Metrics Dashboard*<sup>™</sup> can be customized to suit your organization's needs
- Contact Bob Parro at [bparro@rivernorthsolutions.com](mailto:bparro@rivernorthsolutions.com)