

*ExportMe*<sup>™</sup> is an IBM<sup>®</sup> DOORS<sup>®</sup> accelerator product from  
River North Solutions

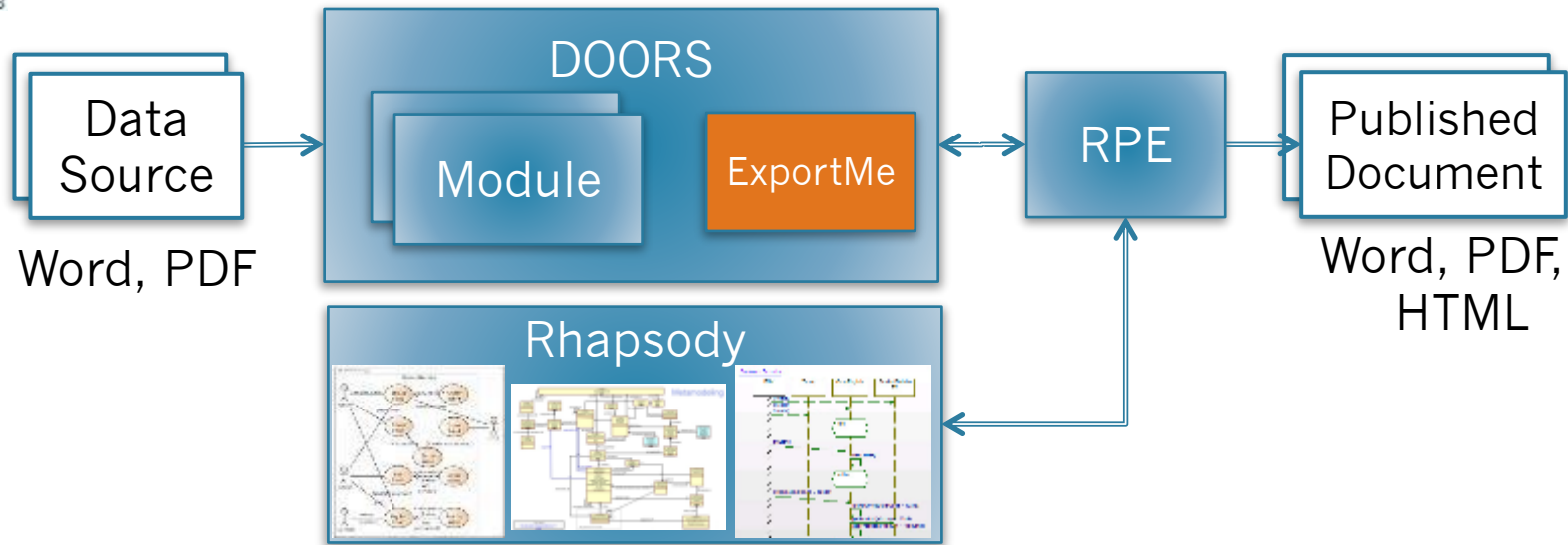


**ExportMe<sup>™</sup>**  
**for DOORS and RPE**

*Document publishing automation, simplification and  
standardization*

# Accelerate Requirements Management & Document Publishing

## What is ExportMe?

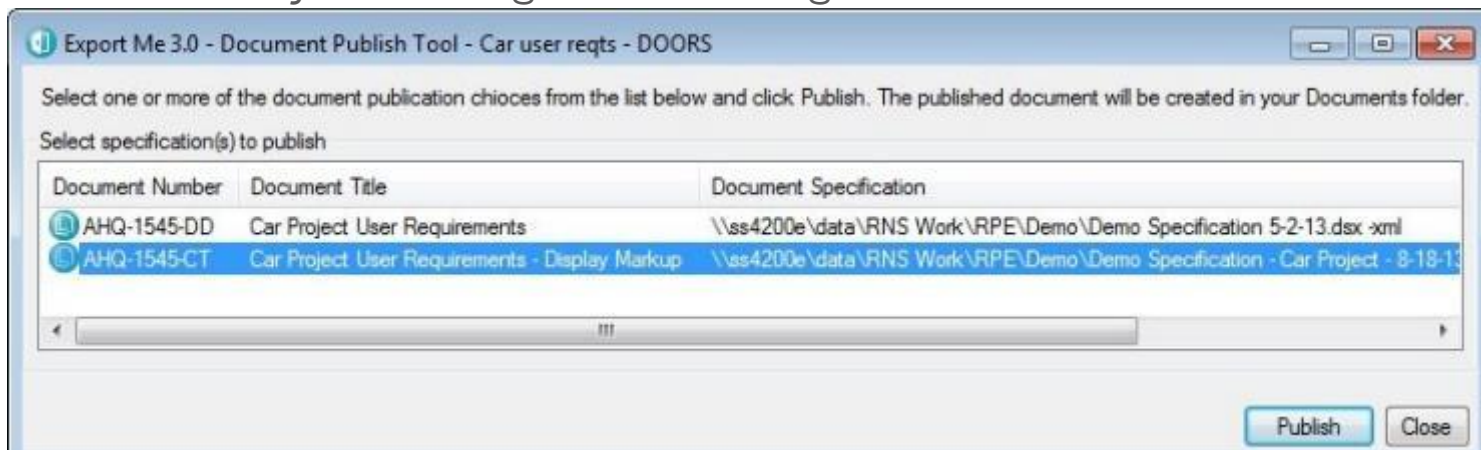


- ExportMe automates document publishing from DOORS and other Rational tools using Rational Publishing Engine (RPE)...to a single-click
- Together with RPE, sharply reduces or eliminates manual post-processing
- Enables publishing multiple documents from a DOORS module in a single operation that includes data from DOORS, Rhapsody, others
- Radically reduces the number of RPE document specifications needed to produce all required project requirement documents

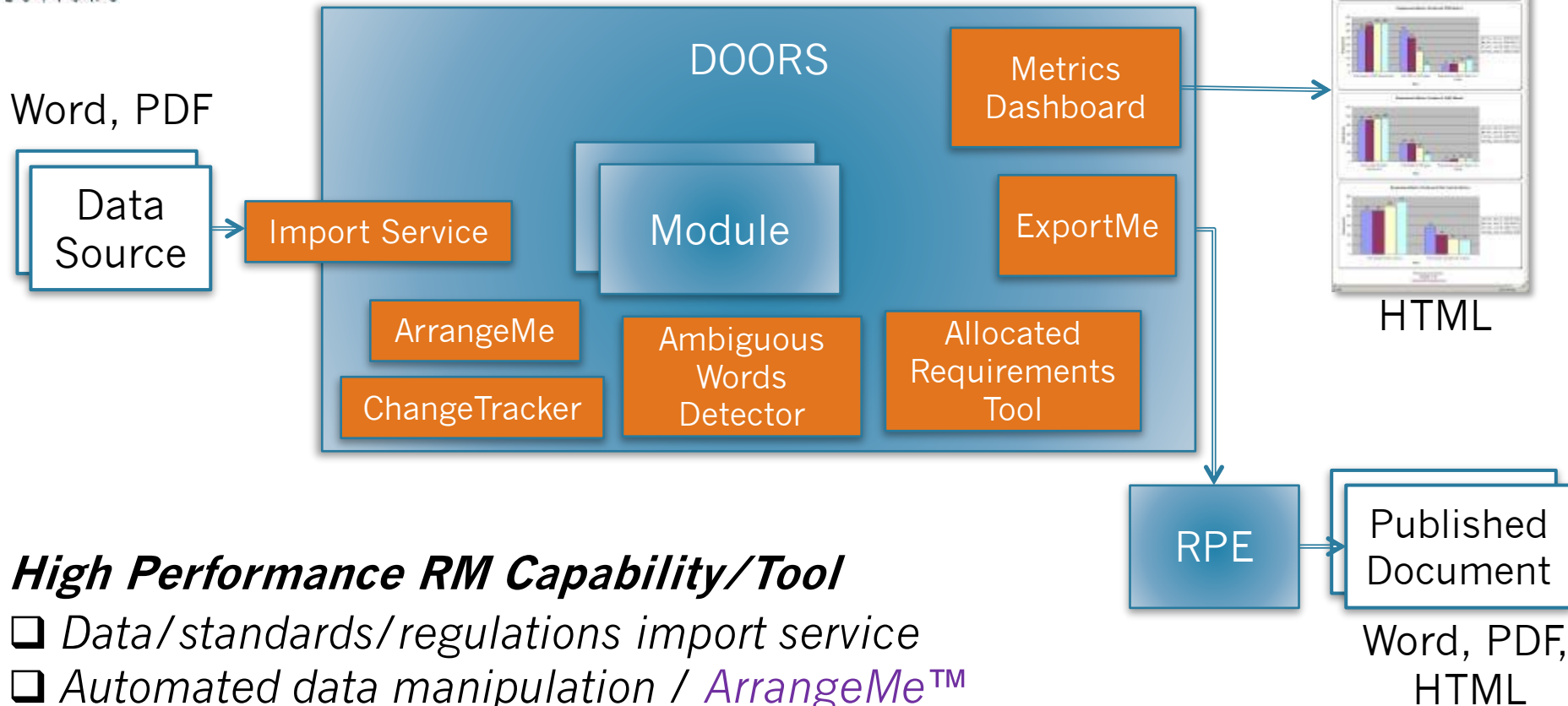
# Accelerate Requirements Management & Document Publishing

## ExportMe – Value Proposition

- Single-click publishing
  - No RPE/doc publishing user training required
  - Automatic document format consistency
  - Publish multiple documents in one operation using multiple sources (e.g. DOORS, Rhapsody)
  - Avg of 7.5 to 1 RM document publishing effort savings on project
- Smart publishing – single Document Specification for all published documents
  - Drives # of RPE Document Specifications to minimum
    - NuScale Power 360 -> 1
    - Westinghouse: 800 -> 1
  - Significantly reduces Document Specification maintenance, supportability, sustainability and configuration management costs



# River North Accelerator Tools for Requirements Management & Document Publishing



## ***High Performance RM Capability/Tool***

- Data/standards/regulations import service*
- Automated data manipulation / [ArrangeMe™](#)*
- Boost requirement quality, reduce churn / [Ambiguous Words Detector™](#)*
- Automated, simplified, consistent document publishing / [ExportMe™](#)*
- Monitor leading indicator trends / [Metrics Dashboard™](#)*
- Display revision markup using rich text / [ChangeTracker™](#)*
- Reuse requirements / [Allocated Requirements Tool™](#)*



# Accelerate Requirements Management & Document Publishing Frequently Used River North Service

- Accelerate time to production-ready RPE templates
  - When considering training internal staff on RPE template authoring, consider the “Use It or Lose It” principle
  - Outsourcing brings far greater ROI if publishing requirements are stable...because template authoring skills only needed infrequently
  - Only if staff will be continuously using template authoring skills is there a legitimate ROI for training internal staff
  - Additionally, leveraging River North’s expertise will drive number of RPE templates to a minimum
    - Eases configuration management, maintainability, supportability of templates

# River North Profile – Industries/Clients\*, Products

- **Aerospace & Defense**
  - Aerojet Rocketdyne
  - Boeing
  - Collins Aerospace
  - Crane Aerospace
  - LMCO-NASA
  - NASA JPL
  - Northrop Grumman
- **Energy**
  - NuScale Power
  - Sandia National Labs
  - Westinghouse Nuclear
- **Automotive**
  - Ford Motor Company
  - Honda Motor Company
  - Johnson Controls
- **Medical Device**
  - Ameda
  - Ascensia Diabetes Care
  - Baxter Healthcare
  - Bayer Healthcare
  - Eli Lilly
  - Hospira
  - J&J Vision
  - Roche Diagnostics
  - St. Jude Medical (Abbott)
- **Semiconductor**
  - NXP Semiconductors
- **Transportation**
  - Hatch
  - Ansaldo STS
  - Bombardier Transportation
  - GE Transportation
- **Telecommunications**
  - Comcast
  - Motorola Solutions
- **Industrial**
  - Chamberlain
  - HP Enterprise Services

## DOORS Classic Accelerator Products from River North

- **Ambiguous Words Detector™ (AWD)** – boosts requirement quality by automatically detecting ambiguous words in DOORS
- **ArrangeMe™** – automated DOORS data manipulation/movement
- **Requirement Metrics Dashboard™ (RMD)** – automated metrics production for DOORS
- **ChangeTracker™** – revision markup displayed using rich text in DOORS
- **ExportMe™** – document publishing automation taken to a new level in DOORS
- **Allocated Requirements Tool™ (ART)** – facilitates requirement reuse in DOORS

### Contact Information

[www.rivernorthsolutions.com](http://www.rivernorthsolutions.com)  
[info@rivernorthsolutions.com](mailto:info@rivernorthsolutions.com)



\* Partial List



# Accelerate Requirements Management & Document Publishing

## River North Contact Information

- For questions or additional information please send email to

[bparro@rivernorthsolutions.com](mailto:bparro@rivernorthsolutions.com)