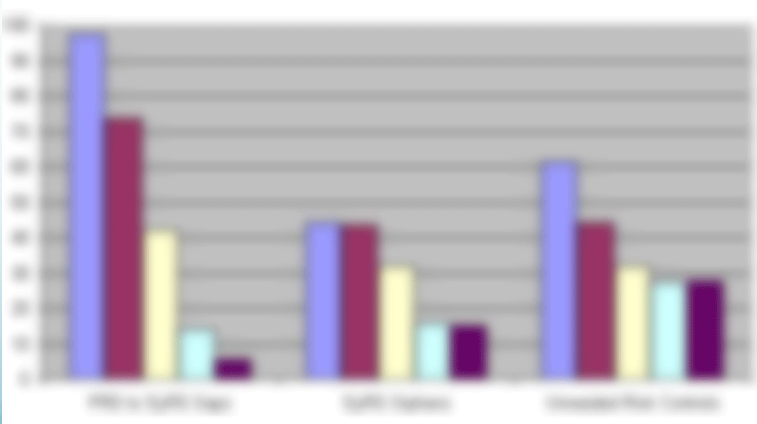


Metrics Dashboard™ is an IBM® Rational® DOORS® accelerator product, part of the **Smarter Solutions** product line from River North Solutions



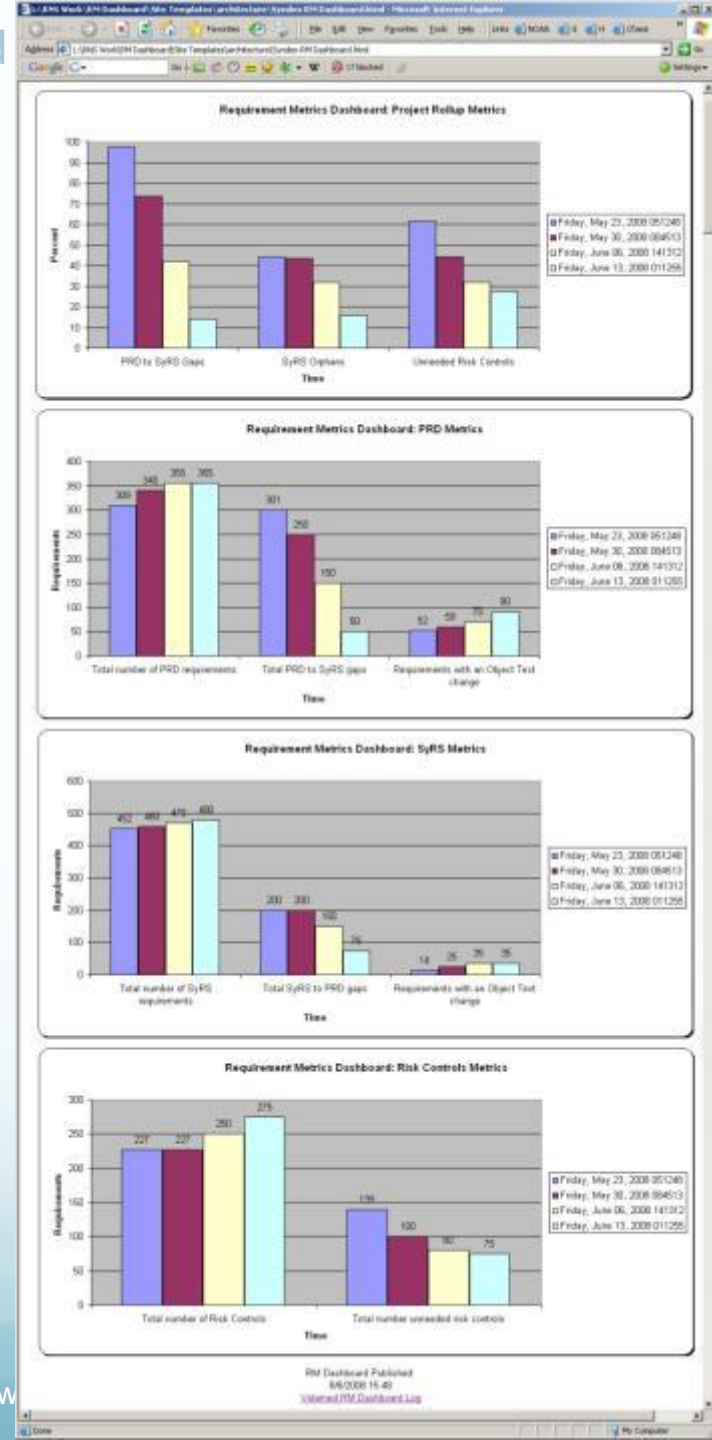
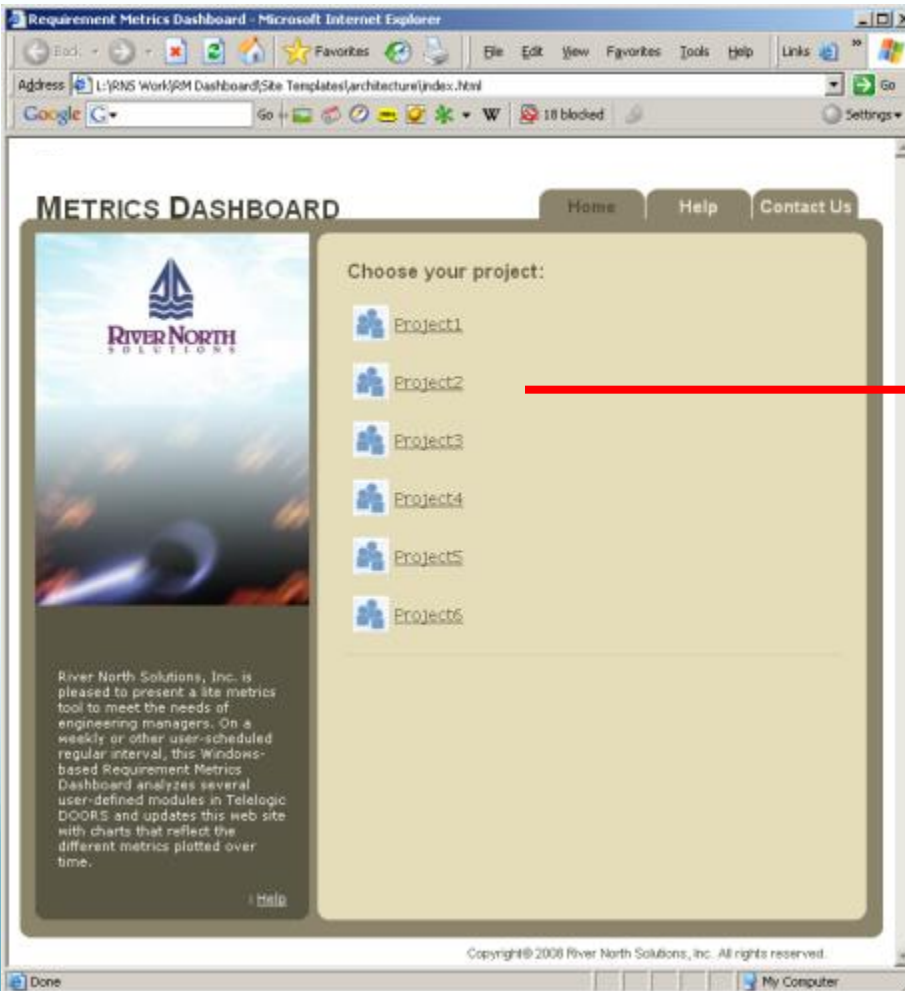
Metrics Dashboard™ for DOORS

V1.3



Overview

- Dashboard Website Displaying Projects Whose Metrics Can Be Viewed



Metrics Dashboard Overview

- Runs regularly as a Windows scheduled task
- Analyzes 4 DOORS modules:
 - For Example:
 - Product Requirements Document
 - System Requirements Spec
 - System Design Spec
 - Validation Test Spec
- Updates charts containing metrics data
- Publishes charts to a web site
- Unattended operation
- Metrics consumers navigate to web site – no software interaction necessary

Windows
Scheduler

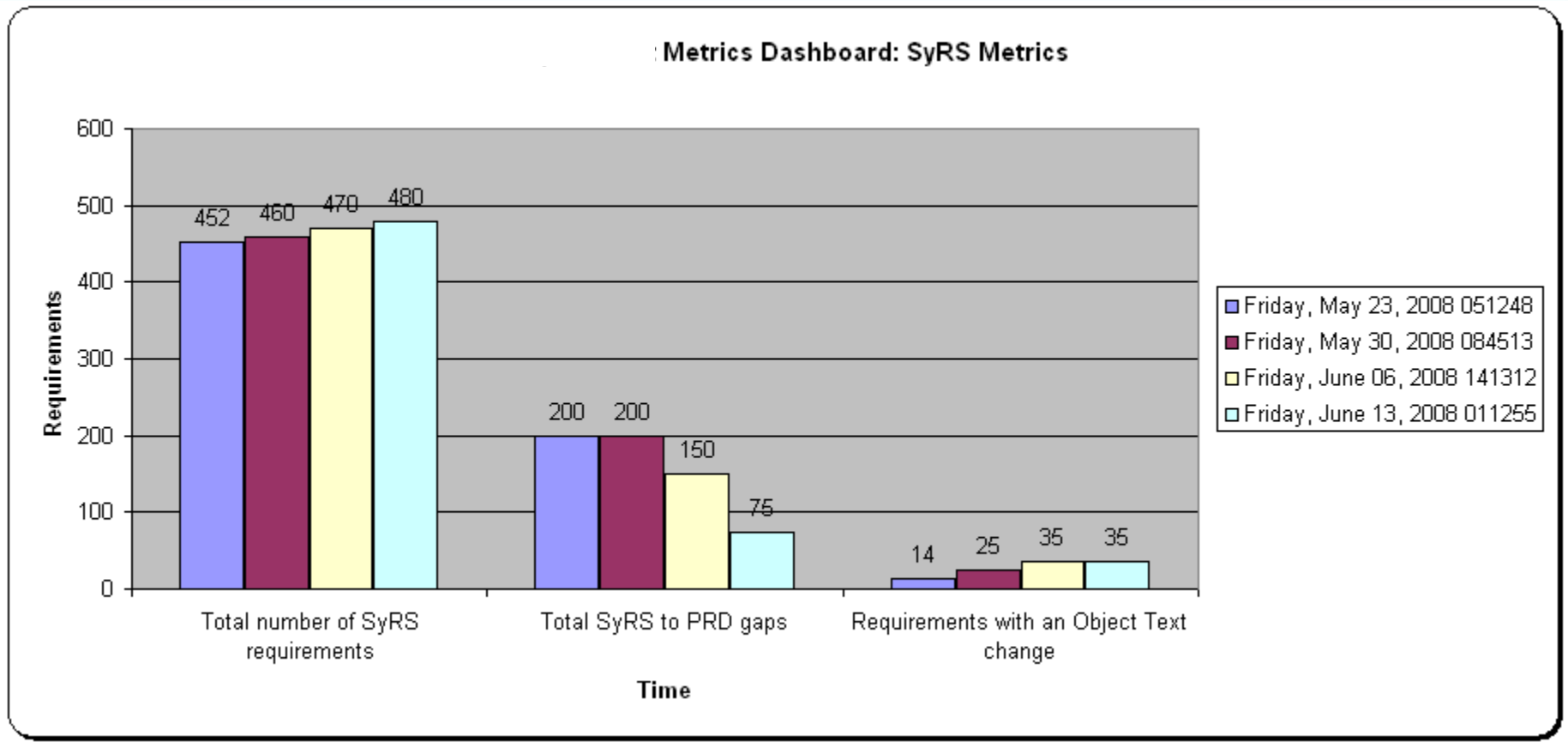


Dashboard Website Home Page



Interpreting Dashboard Metrics

- Example: System Level Metrics

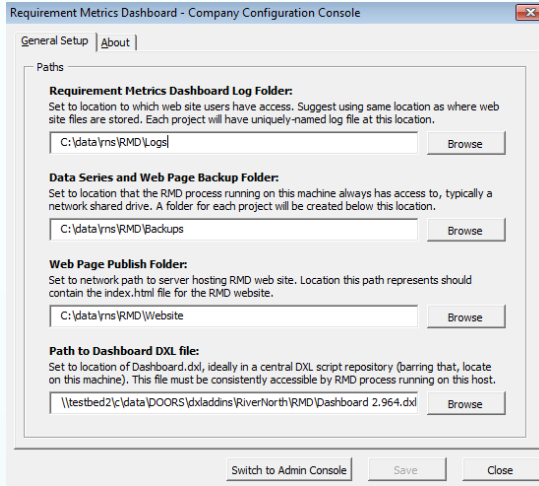


Interpreting Dashboard Metrics

- Example: System Level Chart
 - Example metric: Total number of system requirements:
 - System requirement growth
 - Example metric: Total orphan system requirements:
 - System requirements not traced up to product level
 - Less is better, goal is zero
 - Example metric: Total number of objects with a particular status:
 - Approved vs. Pending Approval
 - Less Pending Approval is better

RMD Overview – Dashboard Components

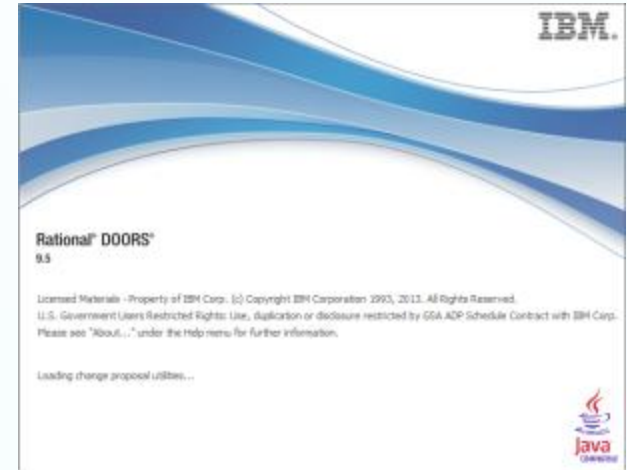
Company Configuration Console



Administrator Console

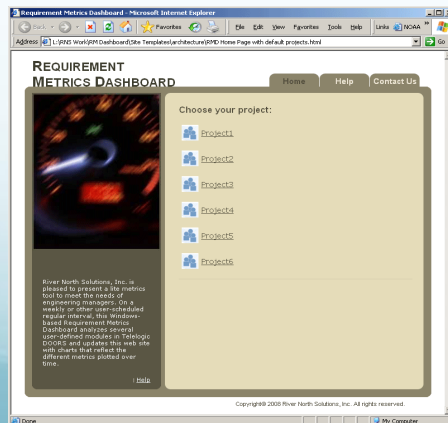
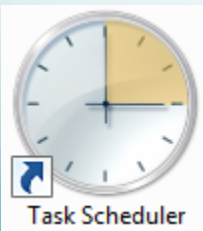


DOORS

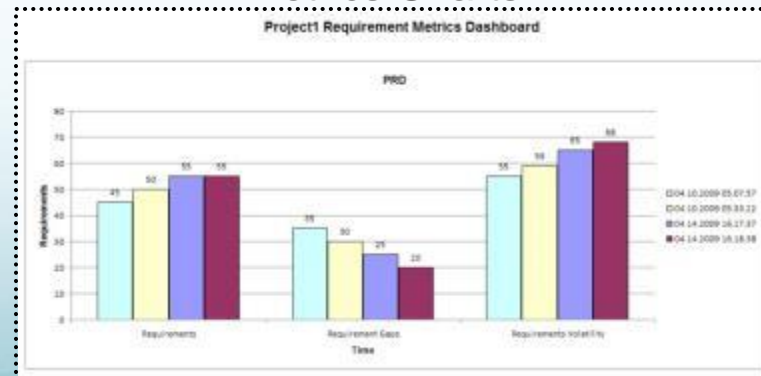


Dashboard Website

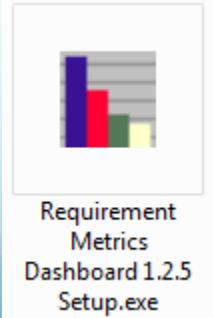
Windows Scheduler



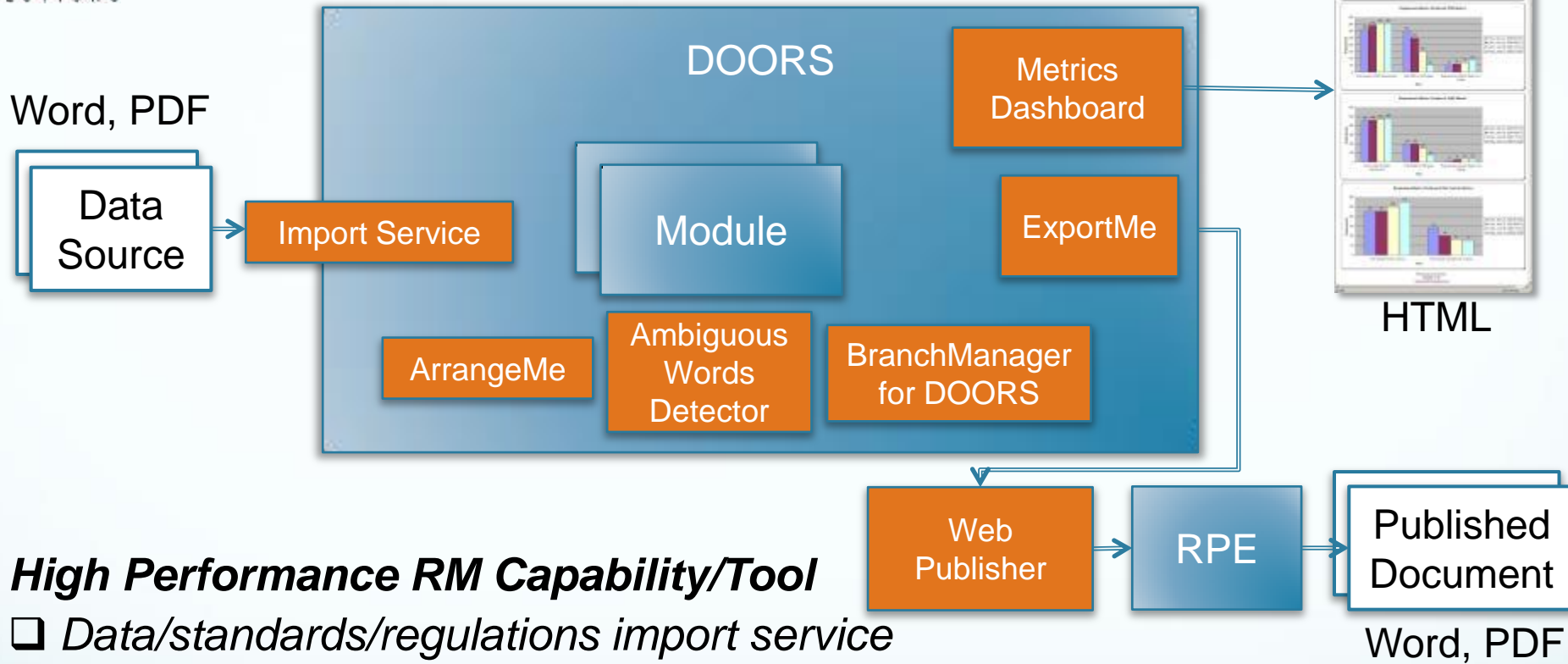
Metrics Charts



Installer



River North Smarter Solutions for Requirements Management & Document Publishing



High Performance RM Capability/Tool

- Data/standards/regulations import service
- Automated data manipulation / [ArrangeMe](#)
- Boost requirement quality, reduce churn / [Ambiguous Words Detector](#)
- Parallel stream development / [BranchManager for DOORS](#)
- Automated, simplified, consistent document publishing / [ExportMe](#)
- Reduced tool footprint & licenses / [Web Publisher](#)
- Monitor leading indicator trends / [Metrics Dashboard](#)



River North Profile

Industry/Client Experience (partial)

- Transportation
 - Ansaldo STS
 - Bombardier Transportation
 - GE Transportation
- Automotive
 - Ford Motor Company
- Aerospace & Defense
 - Aerojet Rocketdyne
 - Crane Aerospace
 - Northrop Grumman
 - NASA JPL
 - LMCO-NASA
- Energy
 - NuScale Power
 - Westinghouse Nuclear
- Medical Device
 - Baxter Healthcare
 - Bayer Healthcare
 - Eli Lilly
 - Hospira
 - Roche Diagnostics
 - St. Jude Medical
- Telecommunications
 - Comcast
- Industrial
 - Chamberlain
 - HP Enterprise Services

Professional Society Leadership

INCOSE

- Chicagoland Chapter President
- Risk Management WG Co-Chair
- Midwest Biomedical Healthcare WG

IEEE

- Board of Directors

IBM Software Expertise

Requirements Management

- Rational DOORS
- Rational DOORS Next Generation
- Rational Requisite Pro

Collaborative Lifecycle Management

- Rational Team Concert (RTC)
- Rational Quality Manager (RQM)
- Jazz platform

Document Publishing

- Rational Publishing Engine (RPE)

Modeling

- Rhapsody (Systems & Software)
- Design Manager (DM)
- Rational Systems Architect (EA)
- Rational Software Architect (IT)

Product/Portfolio Management

- Rational Focal Point

Training

- All above IBM products
- MBSE – SysML/UML languages, plans, methods, and tools

River North Rational Accelerator

Products

- [*Ambiguous Words Detector*](#)[™] (AWD)
- [*ArrangeMe*](#)[™] – DOORS data manipulation
- [*Requirement Metrics Dashboard*](#)[™] (RMD)
- [*ChangeTracker*](#)[™] – revision rich text markup
- [*ExportMe*](#)[™] – automated doc publishing
- [*Allocated Requirements Tool*](#)[™] (ART)

Key River North Smarter Solutions

- Data input and manipulation automation
- Requirements quality and churn reduction automation
- Product variant productivity
- Process automation
- Data/document publishing automation
- Metrics

Staff Augmentation

- Systems engineers

Contact Information

www.rivernorthsolutions.com

info@rivernorthsolutions.com





For More Information...

- *Metrics Dashboard*[™] can be customized to suit your organization's needs
- Contact Bob Parro at bparro@rivernorthsolutions.com