

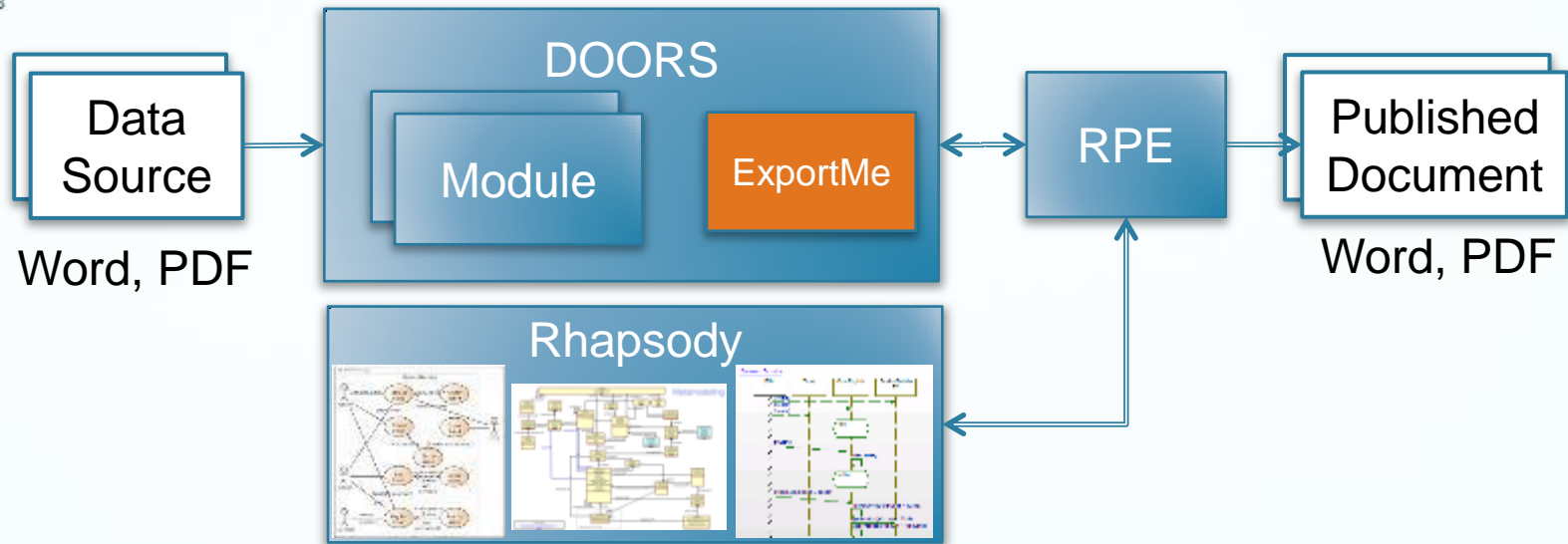
*ExportMe*<sup>™</sup> is an IBM<sup>®</sup> Rational<sup>®</sup> DOORS<sup>®</sup> accelerator product, part of the **Smarter Solutions** product line from River North Solutions



# *ExportMe*<sup>™</sup> for DOORS and RPE

*Document publishing automation, simplification and standardization*

# What is ExportMe?

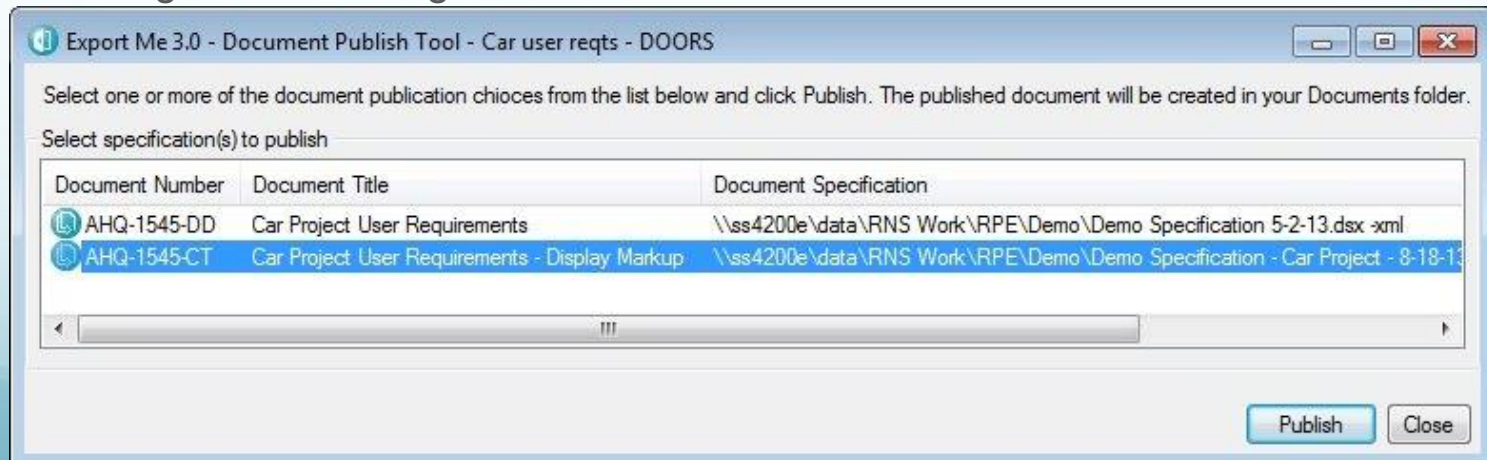


- ExportMe automates document publishing from DOORS and other Rational tools using Rational Publishing Engine (RPE)...to a single-click
- Together with RPE, sharply reduces or eliminates manual post-processing
- Enables publishing multiple documents from a DOORS module in a single operation that includes data from DOORS, Rhapsody, others
- Radically reduces the number of RPE document specifications needed to produce all required project requirement documents
- ExportMe is an IBM Rational DOORS accelerator product, part of the [Smarter Solutions](#) product line from River North Solutions (see slide 3)

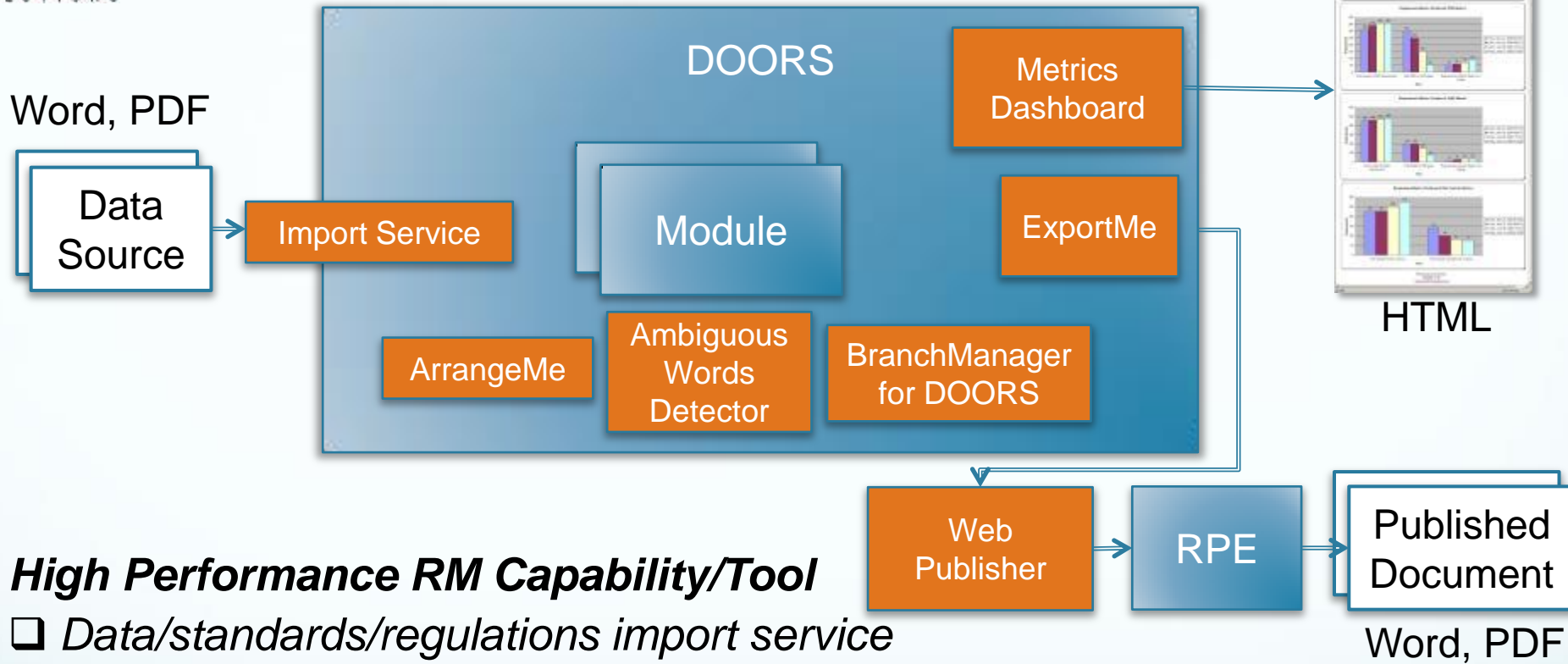
# Accelerate Requirements Management & Document Publishing

## ExportMe – Value Proposition

- Single-click publishing
  - No RPE/doc publishing user training required
  - Automatic document format consistency
  - Publish multiple documents in one operation using multiple sources (e.g. DOORS, Rhapsody)
  - Avg of 7.5 to 1 RM document publishing effort savings on project
- Smart publishing – single Document Specification for all published documents
  - Drives # of RPE Document Specifications to minimum
    - NuScale Power 360 -> 1
    - Fortune 150 company: 800 -> 1
  - Significantly reduces Document Specification maintenance, supportability, sustainability and configuration management costs



# River North Smarter Solutions for Requirements Management & Document Publishing



## High Performance RM Capability/Tool

- Data/standards/regulations import service
- Automated data manipulation / [ArrangeMe](#)
- Boost requirement quality, reduce churn / [Ambiguous Words Detector](#)
- Parallel stream development / [BranchManager for DOORS](#)
- Automated, simplified, consistent document publishing / [ExportMe](#)
- Reduced tool footprint & licenses / [Web Publisher](#)
- Monitor leading indicator trends / [Requirement Metrics Dashboard](#)

## Frequently Used River North Service

- Accelerate time to production-ready RPE template
  - When considering training internal staff on RPE template authoring, consider the “Use It or Lose It” principle
  - Outsourcing brings far greater ROI if publishing requirements are stable...because template authoring skills only needed infrequently
  - Only if staff will be continuously using template authoring skills is there a legitimate ROI for training internal staff
  - Additionally, leveraging River North’s expertise will drive number of RPE templates to a minimum
    - Eases configuration management, maintainability, supportability of templates

# River North Profile

## Industry/Client Experience (partial)

- Transportation
  - Ansaldo STS
  - Bombardier Transportation
  - GE Transportation
- Automotive
  - Ford Motor Company
- Aerospace & Defense
  - Aerojet Rocketdyne
  - Crane Aerospace
  - Northrop Grumman
  - NASA JPL
  - LMCO-NASA
- Energy
  - NuScale Power
  - Westinghouse Nuclear
- Medical Device
  - Baxter Healthcare
  - Bayer Healthcare
  - Eli Lilly
  - Hospira
  - Roche Diagnostics
  - St. Jude Medical
- Telecommunications
  - Comcast
- Industrial
  - Chamberlain
  - HP Enterprise Services

## Professional Society Leadership

### **INCOSE**

- Chicagoland Chapter President
- Risk Management WG Co-Chair
- Midwest Biomedical Healthcare WG

### **IEEE**

- Board of Directors

## IBM Software Expertise

### **Requirements Management**

- Rational DOORS
- Rational DOORS Next Generation
- Rational Requisite Pro

### **Collaborative Lifecycle Management**

- Rational Team Concert (RTC)
- Rational Quality Manager (RQM)
- Jazz platform

### **Document Publishing**

- Rational Publishing Engine (RPE)

### **Modeling**

- Rhapsody (Systems & Software)
- Design Manager (DM)
- Rational Systems Architect (EA)
- Rational Software Architect (IT)

### **Product/Portfolio Management**

- Rational Focal Point

### **Training**

- All above IBM products
- MBSE – SysML/UML languages, plans, methods, and tools

## River North Rational Accelerator

### **Products**

- [\*Ambiguous Words Detector\*](#)<sup>™</sup> (AWD)
- [\*ArrangeMe\*](#)<sup>™</sup> – DOORS data manipulation
- [\*Requirement Metrics Dashboard\*](#)<sup>™</sup> (RMD)
- [\*ChangeTracker\*](#)<sup>™</sup> – revision rich text markup
- [\*ExportMe\*](#)<sup>™</sup> – automated doc publishing
- [\*Allocated Requirements Tool\*](#)<sup>™</sup> (ART)

## Key River North Smarter Solutions

- Data input and manipulation automation
- Requirements quality and churn reduction automation
- Product variant productivity
- Process automation
- Data/document publishing automation
- Metrics

## Staff Augmentation

- Systems engineers

## Contact Information

[www.rivernorthsolutions.com](http://www.rivernorthsolutions.com)

[info@rivernorthsolutions.com](mailto:info@rivernorthsolutions.com)





# Accelerate Requirements Management & Document Publishing

## River North Contact Information

- For questions or additional information please send email to

[info@rivernorthsolutions.com](mailto:info@rivernorthsolutions.com)